

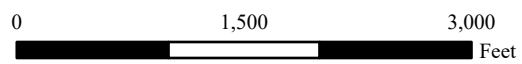
- Ownership**
- USFS
- Harvest Units**
- Ground
- Tether
- Boundary Type**
- Discernible virtual boundary
- Geo-fence virtual boundary
- Marked boundary
- Botany Exclusion SMA
- Other Exclusion Areas
- Roads**
- Closed
- Open to All Vehicles, Yearlong
- Open to All Vehicles, Seasonal
- Open to Hwy Vehicles, Yearlong
- Open to Hwy Vehicles, Seasonal
- Tether Landing
- Tractor Landing
- Invasive Plant Area
- Temp Roads**
- Existing
- Road Points**
- Temp. Crossing
- Rock Source
- Stream Category**
- 2
- 4

EXHIBIT A
TIMBER SALE CONTRACT
 KL-341-2026-GF8525-01
 SUMMIT GNA

Portions of Sections 7, 18, 19, 30, 31 T2N R38E;
 S31 T1N R38E; S6 T1S R38E;
 S13, 23, 24, 25, 26, 35, 36 T2N R37E;
 S1, 2, 12, 13, 14, 23, 24, 25, 36 T1N R37E;
 S1 T1S R37E
 UMATILLA & UNION COUNTIES, OREGON

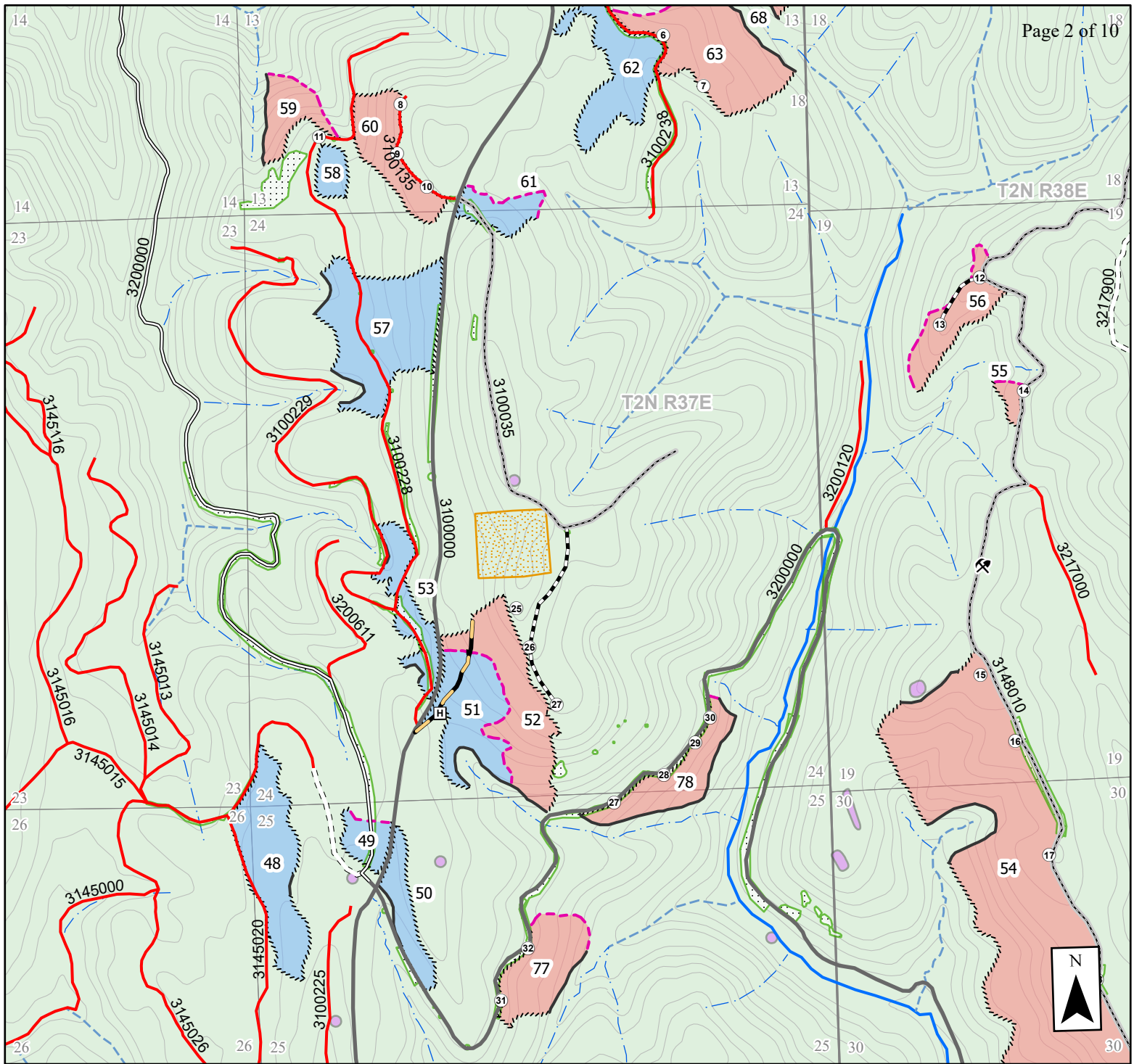
La Grande District GIS
 May 2026

This product is for informational use and may not be
 suitable for legal, engineering, or surveying purposes.



Unit	Acres	Logging Sys	BA Target
58	3	Ground	60-80
59	6	Tether	60-80
60	10	Tether	60-80
62	27	Ground	40-60
63	21	Tether	40-60
64	5	Ground	70-90
65	9	Ground	40-60
66	6	Ground	40-60
67	10	Ground	50-70
68	16	Tether	40-60
69	36	Ground	30-50
70	5	Ground	20-40
71	8	Ground	40-60
72	13	Ground	60-80
73	2	Ground	20-40
74	14	Ground	30-50
75	11	Tether	30-50
76	32	Ground	20-40

1:15,200
 1 inch = 1,267 feet



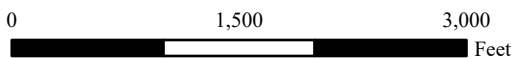
- Ownership**
- USFS
- Harvest Units**
- Ground
- Tether
- Boundary Type**
- Discernible virtual boundary
- Geo-fence virtual boundary
- Marked boundary
- Botany Exclusion SMA
- Other Exclusion Areas
- Roads**
- Closed
- Open to All Vehicles, Yearlong
- Open to All Vehicles, Seasonal
- Open to Hwy Vehicles, Yearlong
- Open to Hwy Vehicles, Seasonal
- Tether Landing
- Tractor Landing
- Invasive Plant Area
- Temp Roads**
- Existing
- New Construction
- Road Points**
- Rock Source
- Stream Category**
- 2
- 4

EXHIBIT A
TIMBER SALE CONTRACT
 KL-341-2026-GF8525-01
 SUMMIT GNA

Portions of Sections 7, 18, 19, 30, 31 T2N R38E;
 S31 T1N R38E; S6 T1S R38E;
 S13, 23, 24, 25, 26, 35, 36 T2N R37E;
 S1, 2, 12, 13, 14, 23, 24, 25, 36 T1N R37E;
 S1 T1S R37E
 UMATILLA & UNION COUNTIES, OREGON

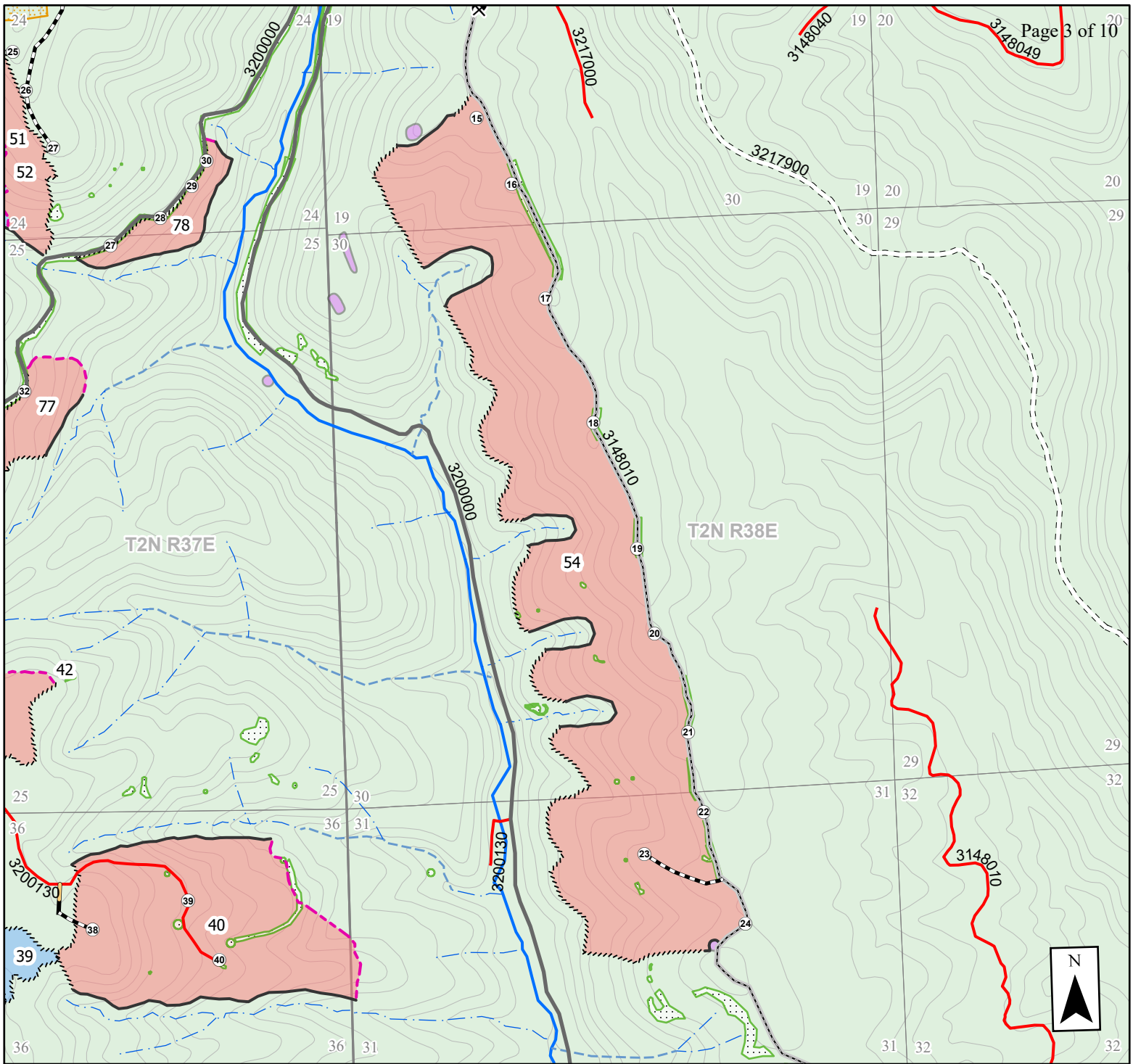
La Grande District GIS
 May 2026

This product is for informational use and may not be
 suitable for legal, engineering, or surveying purposes.



Unit	Acres	Logging Sys	BA Target
48	17	Ground	50-70
49	4	Ground	50-70
50	6	Ground	50-70
51	13	Ground	30-50
52	17	Tether	40-60
53	8	Ground	50-70
54	192	Tether	40-60
55	1	Tether	40-60
56	8	Tether	40-60
57	24	Ground	40-60
58	3	Ground	60-80
59	6	Tether	60-80
60	10	Tether	60-80
61	5	Ground	30-50
62	27	Ground	40-60
63	21	Tether	40-60
68	16	Tether	40-60
77	11	Tether	40-60
78	10	Tether	40-60

1:15,200
 1 inch = 1,267 feet



- Ownership**
- USFS
- Harvest Units**
- Ground
- Tether
- Boundary Type**
- Discernible virtual boundary
- Geo-fence virtual boundary
- Marked boundary
- Botany Exclusion SMA
- Other Exclusion Areas
- Roads**
- Closed
- Open to All Vehicles, Yearlong
- Open to All Vehicles, Seasonal
- Open to Hwy Vehicles, Seasonal
- Tether Landing
- Invasive Plant Area
- Temp Roads**
- Existing
- New Construction
- Road Points**
- Rock Source
- Stream Category**
- 2
- 4

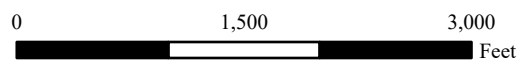
EXHIBIT A
TIMBER SALE CONTRACT
 KL-341-2026-GF8525-01
 SUMMIT GNA

Portions of Sections 7, 18, 19, 30, 31 T2N R38E;
 S31 T1N R38E; S6 T1S R38E;
 S13, 23, 24, 25, 26, 35, 36 T2N R37E;
 S1, 2, 12, 13, 14, 23, 24, 25, 36 T1N R37E;
 S1 T1S R37E
 UMATILLA & UNION COUNTIES, OREGON

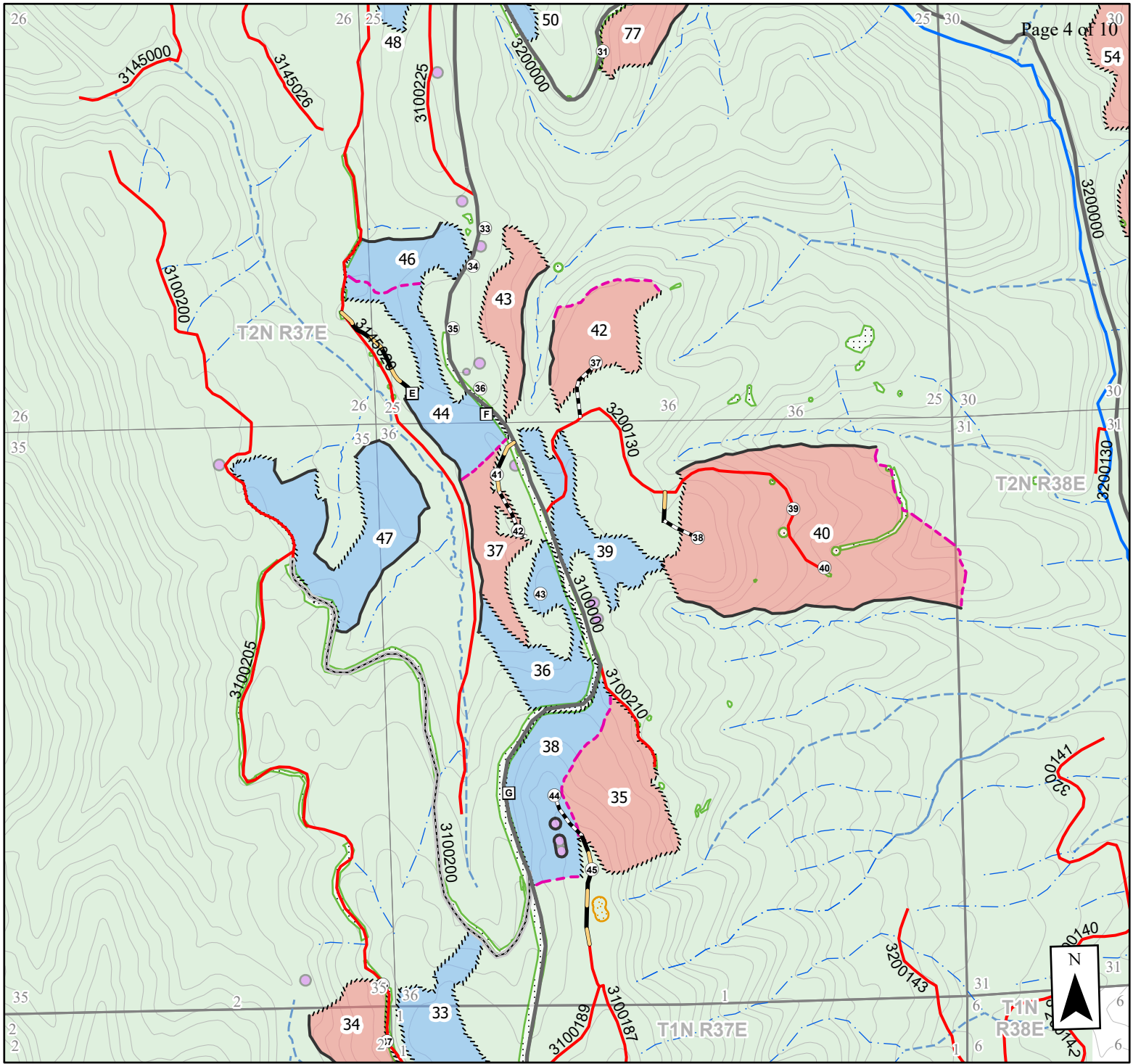
Unit	Acres	Logging Sys	BA Target
39	13	Ground	30-50
40	74	Tether	30-50
42	15	Tether	30-50
51	13	Ground	30-50
52	17	Tether	40-60
54	192	Tether	40-60
77	11	Tether	40-60
78	10	Tether	40-60

La Grande District GIS
 May 2026

This product is for informational use and may not be
 suitable for legal, engineering, or surveying purposes.



1:15,200
 1 inch = 1,267 feet



- Ownership**
- USFS
- Harvest Units**
- Ground
 - Tether
- Boundary Type**
- Discernible virtual boundary
 - Geo-fence virtual boundary
 - Marked boundary
 - Botany Exclusion SMA
 - Other Exclusion Areas
- Roads**
- Closed
 - Open to All Vehicles, Seasonal
 - Open to Hwy Vehicles, Seasonal

- Tether Landing
 - Tractor Landing
 - Invasive Plant Area
- Temp Roads**
- Existing
 - New Construction
- Stream Category**
- 2
 - 4

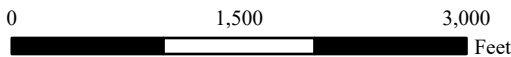
EXHIBIT A
TIMBER SALE CONTRACT
 KL-341-2026-GF8525-01
 SUMMIT GNA

Portions of Sections 7, 18, 19, 30, 31 T2N R38E;
 S31 T1N R38E; S6 T1S R38E;
 S13, 23, 24, 25, 26, 35, 36 T2N R37E;
 S1, 2, 12, 13, 14, 23, 24, 25, 36 T1N R37E;
 S1 T1S R37E

UMATILLA & UNION COUNTIES, OREGON

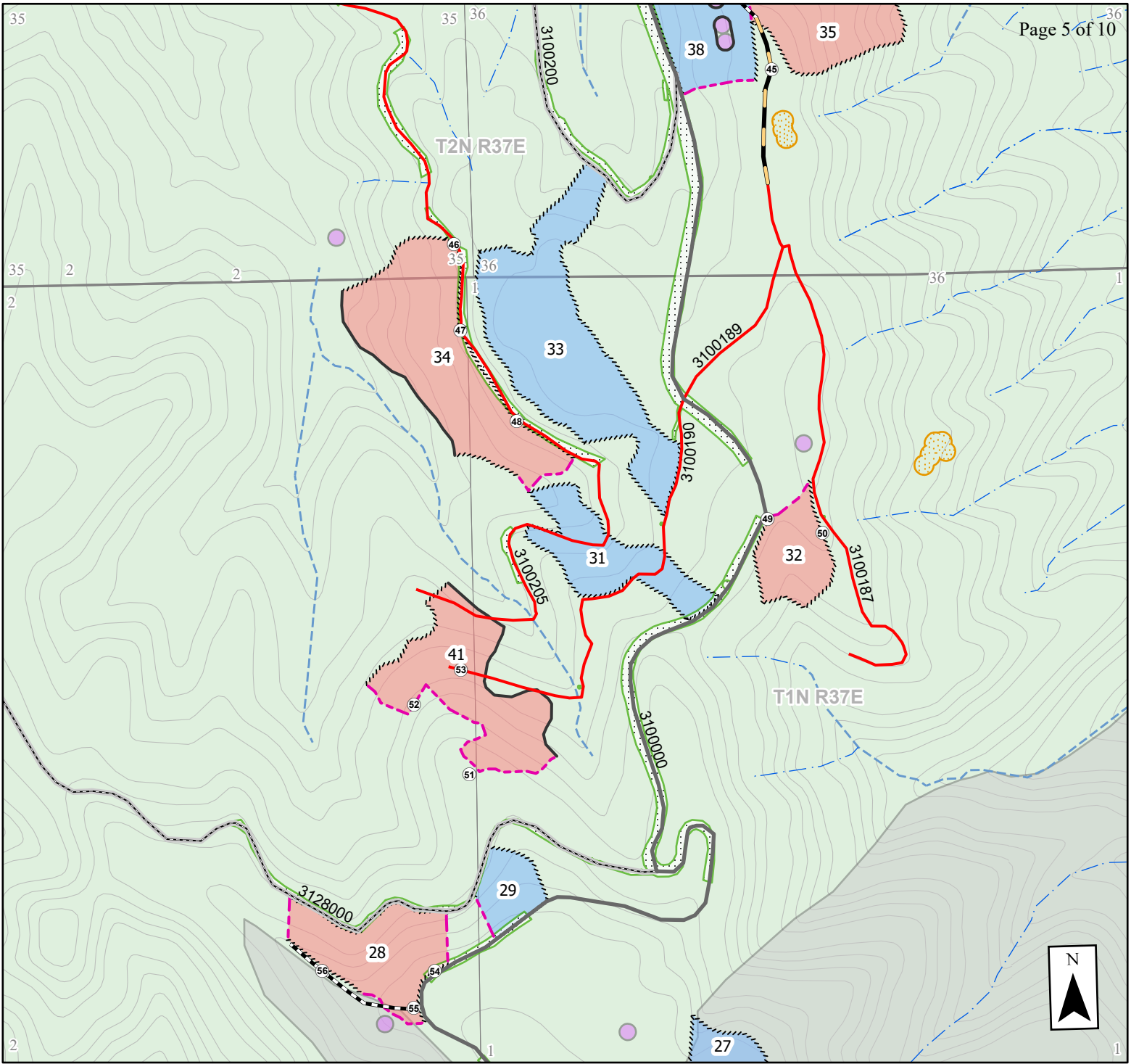
La Grande District GIS
 May 2026

This product is for informational use and may not be suitable for legal, engineering, or surveying purposes.



Unit	Acres	Logging Sys	BA Target
33	20	Ground	50-70
34	18	Tether	50-70
35	23	Tether	40-60
36	15	Ground	30-50
37	10	Tether	30-50
38	20	Ground	30-50
39	13	Ground	30-50
40	74	Tether	30-50
42	15	Tether	30-50
43	10	Tether	40-60
44	16	Ground	30-50
46	10	Ground	50-70
47	29	Ground	50-70
48	17	Ground	50-70
50	6	Ground	50-70
54	192	Tether	40-60
77	11	Tether	40-60

1:15,200
 1 inch = 1,267 feet



- Ownership**
- USFS
- Harvest Units**
- Ground
- Tether
- Boundary Type**
- Discernible virtual boundary
- Geo-fence virtual boundary
- Marked boundary
- Botany Exclusion SMA
- Other Exclusion Areas
- Inventoried Roadless Area
- Roads**
- Closed
- Open to All Vehicles, Seasonal
- Open to Hwy Vehicles, Seasonal

- Tether Landing
- Invasive Plant Area
- Temp Roads**
- Existing
- New Construction
- Stream Category**
- 2
- 4

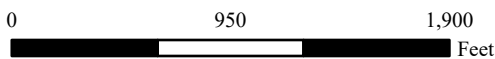
EXHIBIT A
TIMBER SALE CONTRACT
 KL-341-2026-GF8525-01
 SUMMIT GNA

Portions of Sections 7, 18, 19, 30, 31 T2N R38E;
 S31 T1N R38E; S6 T1S R38E;
 S13, 23, 24, 25, 26, 35, 36 T2N R37E;
 S1, 2, 12, 13, 14, 23, 24, 25, 36 T1N R37E;
 S1 T1S R37E
 UMATILLA & UNION COUNTIES, OREGON

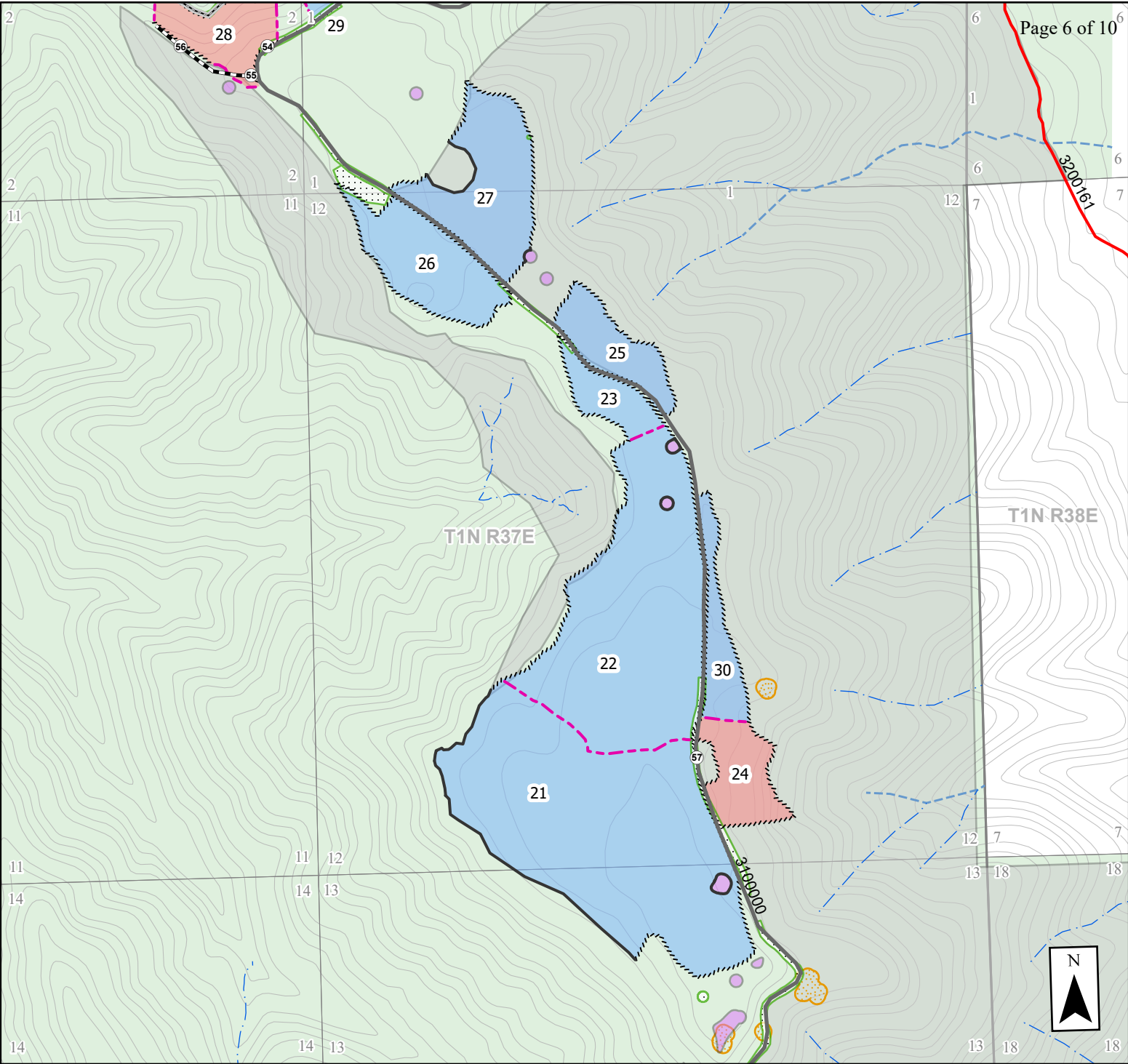
La Grande District GIS
 May 2026

This product is for informational use and may not be
 suitable for legal, engineering, or surveying purposes.

Unit	Acres	Logging Sys	BA Target
27	19	Ground	40-60
28	9	Tether	40-60
29	3	Ground	40-60
31	8	Ground	30-50
32	5	Tether	70-90
33	20	Ground	50-70
34	18	Tether	50-70
35	23	Tether	40-60
38	20	Ground	30-50
41	13	Tether	40-60



1:10,000
 1 inch = 833 feet



- Ownership**
- USFS
- Harvest Units**
- Ground
- Tether
- Boundary Type**
- Discernible virtual boundary
- Geo-fence virtual boundary
- Marked boundary
- Botany Exclusion SMA
- Other Exclusion Areas
- Inventoried Roadless Area
- Roads**
- Closed
- Open to All Vehicles, Seasonal
- Open to Hwy Vehicles, Seasonal

- Tether Landing
- Invasive Plant Area
- Temp Roads**
- New Construction
- Stream Category**
- 2
- 4

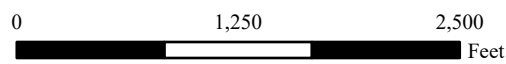
EXHIBIT A
TIMBER SALE CONTRACT
 KL-341-2026-GF8525-01
 SUMMIT GNA

Portions of Sections 7, 18, 19, 30, 31 T2N R38E;
 S31 T1N R38E; S6 T1S R38E;
 S13, 23, 24, 25, 26, 35, 36 T2N R37E;
 S1, 2, 12, 13, 14, 23, 24, 25, 36 T1N R37E;
 S1 T1S R37E
 UMATILLA & UNION COUNTIES, OREGON

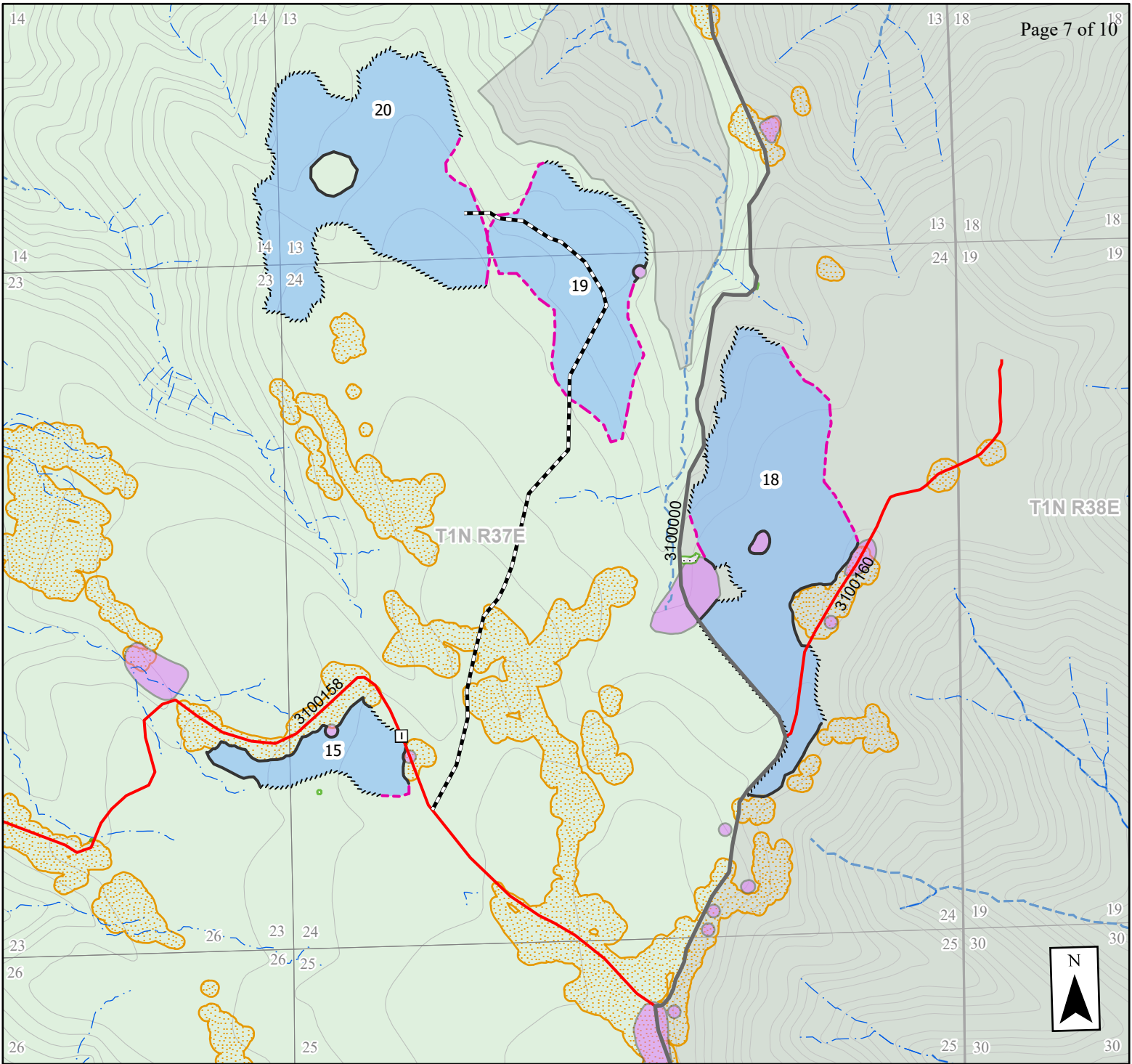
Unit	Acres	Logging Sys	BA Target
21	69	Ground	90-110
22	51	Ground	50-70
23	6	Ground	60-80
24	9	Tether	50-70
25	9	Ground	30-50
26	15	Ground	60-80
27	19	Ground	40-60
28	9	Tether	40-60
29	3	Ground	40-60
30	7	Ground	50-70

La Grande District GIS
 May 2026

This product is for informational use and may not be
 suitable for legal, engineering, or surveying purposes.



1:13,000
 1 inch = 1,083 feet



- Ownership**
- USFS
- Harvest Units**
- Ground
- Boundary Type**
- Discernible virtual boundary
- Geo-fence virtual boundary
- Marked boundary
- Botany Exclusion SMA
- Other Exclusion Areas
- Inventoried Roadless Area
- Roads**
- Closed
- Open to Hwy Vehicles, Seasonal

- Tractor Landing
- Invasive Plant Area
- Temp Roads**
- New Construction
- Stream Category**
- 2
- 4

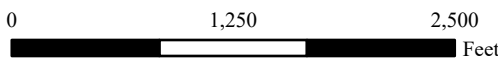
EXHIBIT A
TIMBER SALE CONTRACT
KL-341-2026-GF8525-01
SUMMIT GNA

Portions of Sections 7, 18, 19, 30, 31 T2N R38E;
 S31 T1N R38E; S6 T1S R38E;
 S13, 23, 24, 25, 26, 35, 36 T2N R37E;
 S1, 2, 12, 13, 14, 23, 24, 25, 36 T1N R37E;
 S1 T1S R37E
UMATILLA & UNION COUNTIES, OREGON

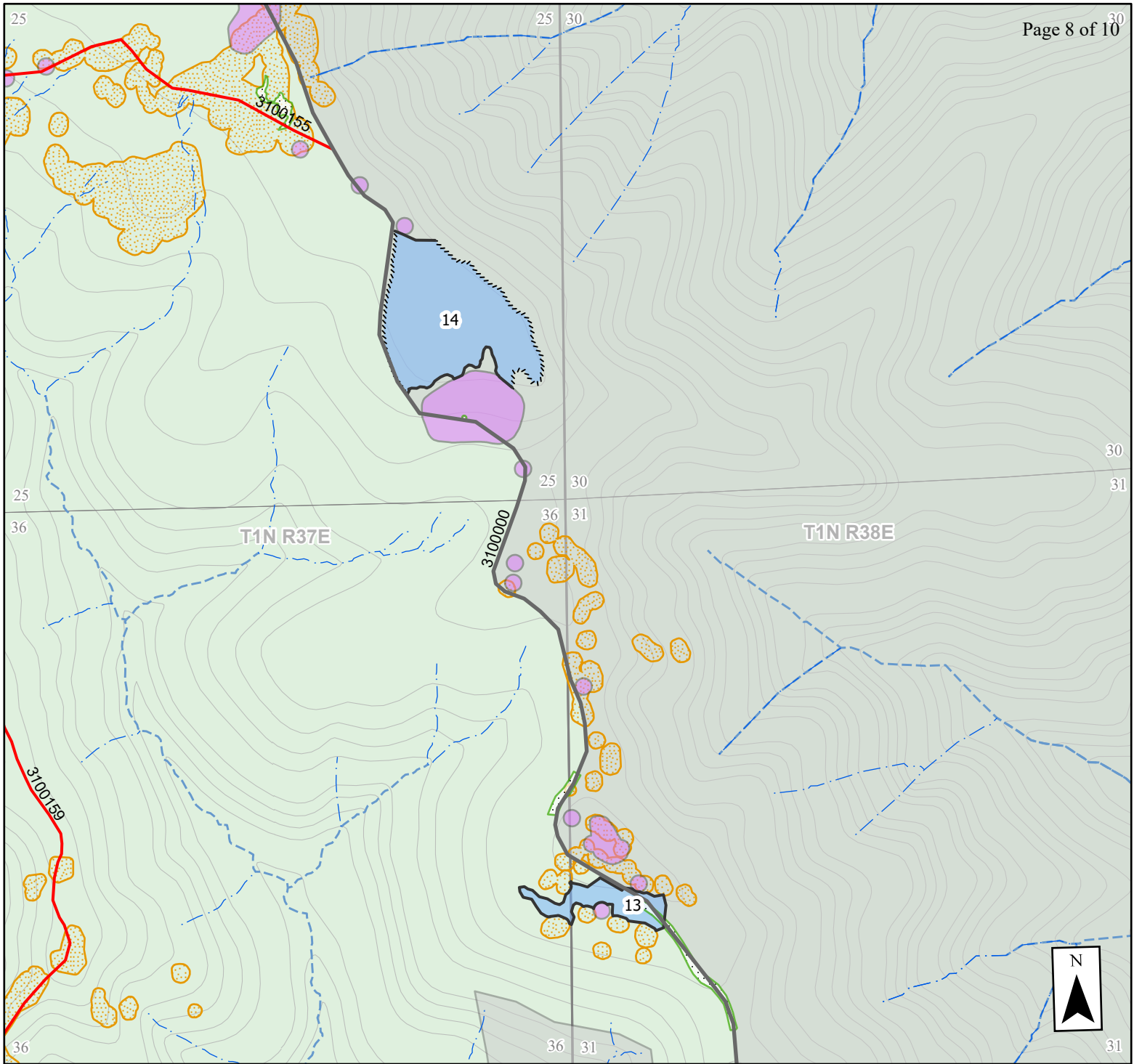
La Grande District GIS
 May 2026

This product is for informational use and may not be
 suitable for legal, engineering, or surveying purposes.

Unit	Acres	Logging Sys	BA Target
15	12	Ground	40-60
18	56	Ground	40-60
19	33	Ground	40-60
20	53	Ground	30-50



1:13,000
 1 inch = 1,083 feet



- Ownership**
- USFS
- Harvest Units**
- Ground
- Boundary Type**
- Discernible virtual boundary
- Marked boundary
- Botany Exclusion SMA
- Other Exclusion Areas
- Inventoried Roadless Area
- Roads**
- Closed
- Open to Hwy Vehicles, Seasonal

- Invasive Plant Area
- Stream Category**
- 2
- 4

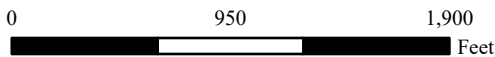
EXHIBIT A
TIMBER SALE CONTRACT
 KL-341-2026-GF8525-01
 SUMMIT GNA

Portions of Sections 7, 18, 19, 30, 31 T2N R38E;
 S31 T1N R38E; S6 T1S R38E;
 S13, 23, 24, 25, 26, 35, 36 T2N R37E;
 S1, 2, 12, 13, 14, 23, 24, 25, 36 T1N R37E;
 S1 T1S R37E
UMATILLA & UNION COUNTIES, OREGON

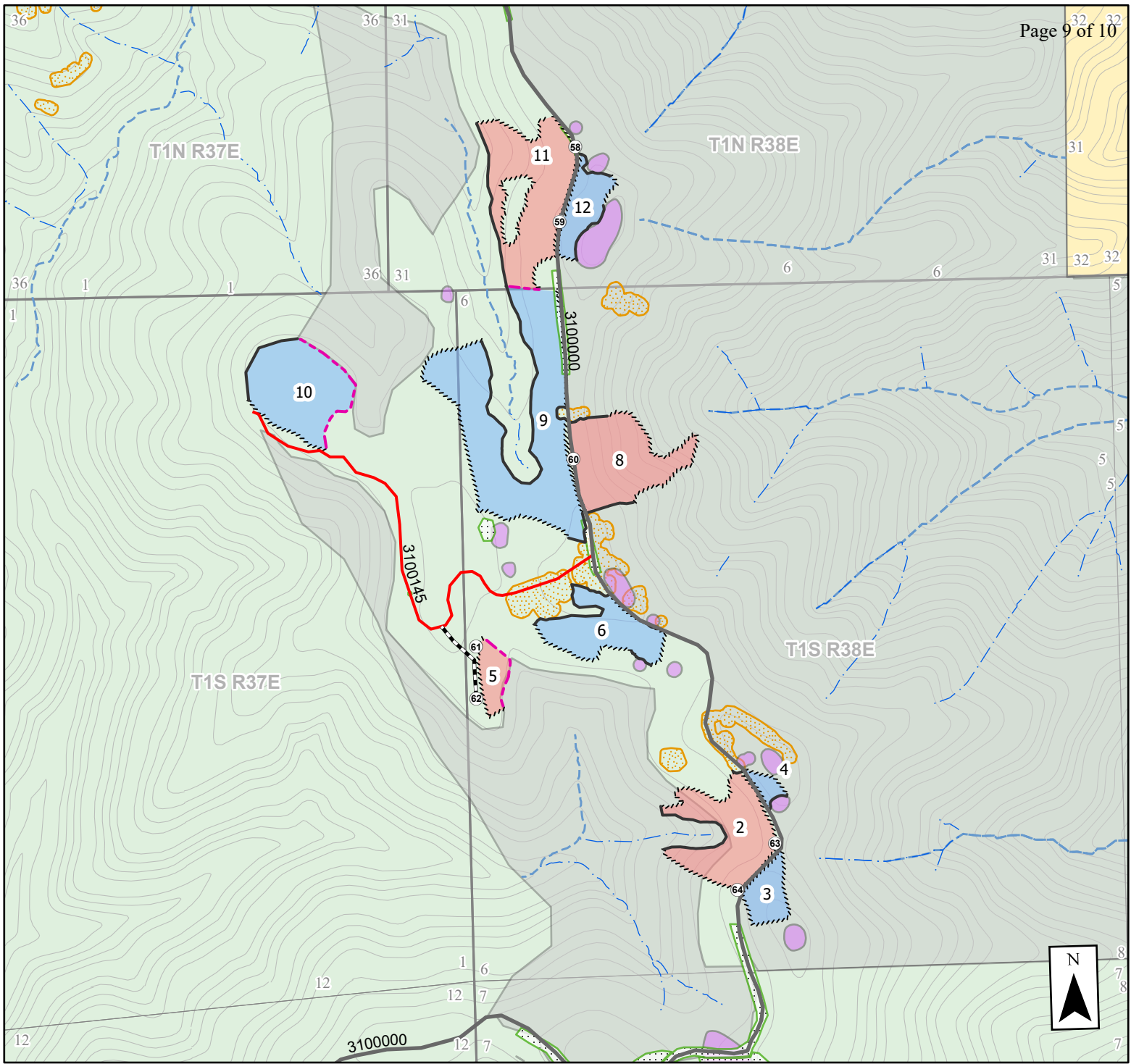
La Grande District GIS
 May 2026

This product is for informational use and may not be
 suitable for legal, engineering, or surveying purposes.

Unit	Acres	Logging Sys	BA Target
13	3	Ground	40-60
14	13	Ground	30-50



1:10,000
 1 inch = 833 feet



- Ownership**
- BLM
- USFS
- Harvest Units**
- Ground
- Tether
- Boundary Type**
- Discernible virtual boundary
- Geo-fence virtual boundary
- Marked boundary
- Botany Exclusion SMA
- Other Exclusion Areas
- Inventoried Roadless Area
- Roads**
- Closed
- Open to Hwy Vehicles, Seasonal

- Tether Landing
- Invasive Plant Area
- Temp Roads**
- New Construction
- Stream Category**
- 2
- 4

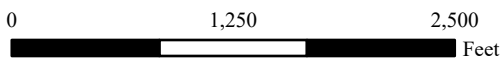
EXHIBIT A
TIMBER SALE CONTRACT
 KL-341-2026-GF8525-01
 SUMMIT GNA

Portions of Sections 7, 18, 19, 30, 31 T2N R38E;
 S31 T1N R38E; S6 T1S R38E;
 S13, 23, 24, 25, 26, 35, 36 T2N R37E;
 S1, 2, 12, 13, 14, 23, 24, 25, 36 T1N R37E;
 S1 T1S R37E
 UMATILLA & UNION COUNTIES, OREGON

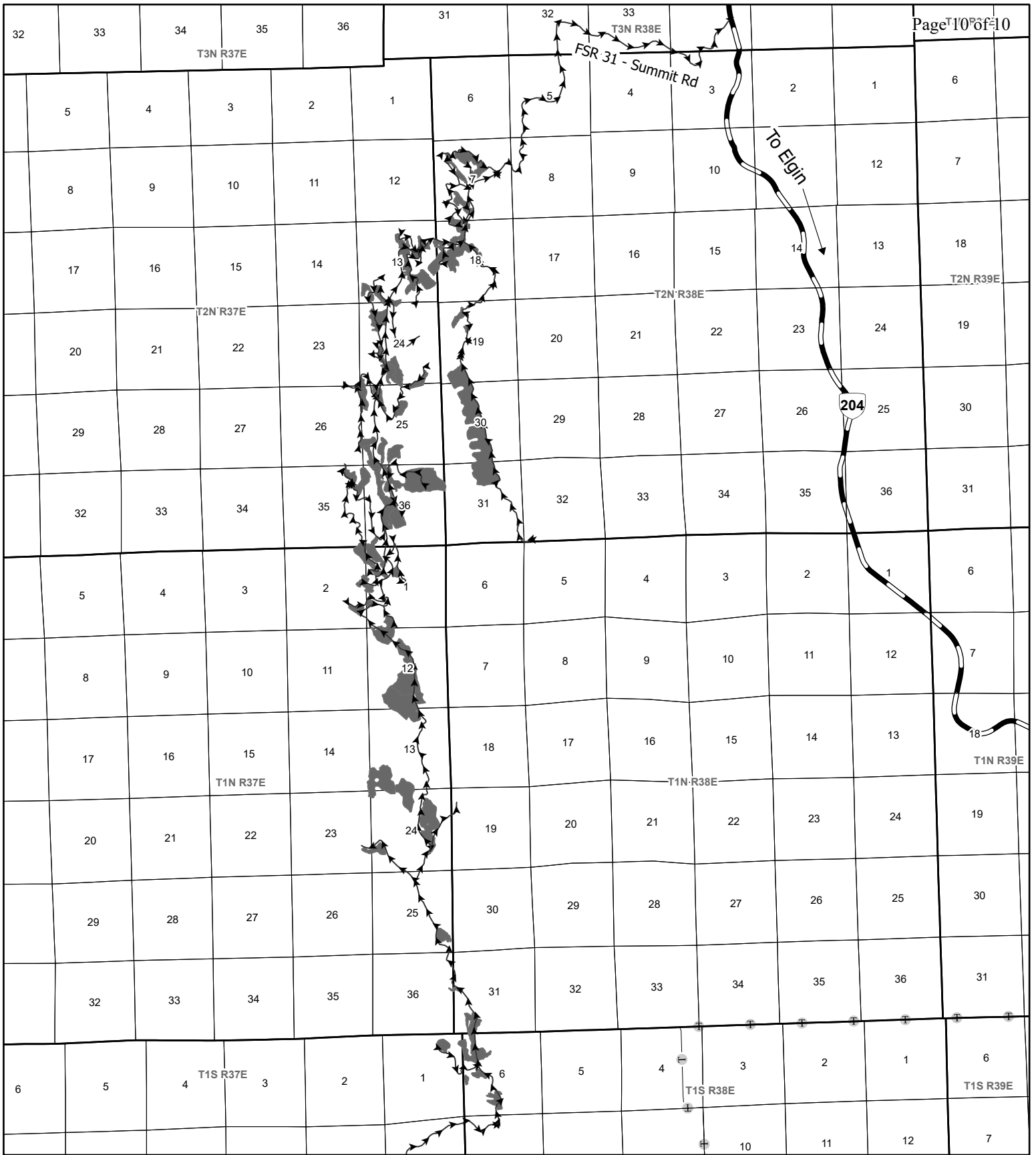
Unit	Acres	Logging Sys	BA Target
10	11	Ground	30-50
11	13	Tether	40-60
12	4	Ground	30-50
2	10	Tether	30-50
3	3	Ground	50-70
4	1	Ground	50-70
5	2	Tether	40-60
6	7	Ground	60-80
8	11	Tether	70-90
9	24	Ground	40-60

La Grande District GIS
 May 2026

This product is for informational use and may not be
 suitable for legal, engineering, or surveying purposes.



1:13,000
 1 inch = 1,083 feet



Legend

- Haul Route Roads
- Sections
- ⊕— Powerlines
- Harvest Units



EXHIBIT A VICINITY MAP

FOR TIMBER SALE CONTRACT
 KL-341-2026-GF8525-01
 SUMMIT GNA
 Portions of Sections 7, 18, 19, 30, 31 T2N R38E;
 S31 T1N R38E; S6 T1S R38E;
 S13, 23, 24, 25, 26, 35, 36 T2N R37E;
 S1, 2, 12, 13, 14, 23, 24, 25, 36 T1N R37E;
 S1 T1S R37E
 UMATILLA & UNION COUNTIES, OREGON

1:100,000

1 inch equals 1.6 miles



La Grande District GIS
 May 2026

This product is for informational use and may not be
 suitable for legal, engineering, or surveying purposes.